

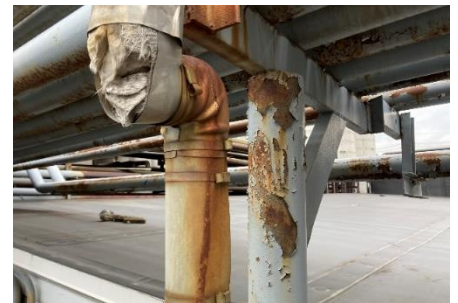
FACILITY INSPECTION & ASSESSMENT DIVISION

A Facility Inspection Assessment is a documented visual review of the property's and structure's systems to assess conditions and determine capital expense requirements for maintaining, repairing, or replacing them within a specified timeframe. Whitestone provides comprehensive solutions to our clients to assess property/building performance at various stages of the project lifecycle, from due diligence through construction, and to assist in asset management.

Whitestone also assists clients to determine the potential impacts of hazardous building materials, including asbestos and lead-based paint, prior to renovations, demolitions, or property acquisition.

Whitestone's Facility Inspection & Assessment Division Services include:

- Property Condition Assessments (PCA) in accordance with ASTM E2018-15;
- Reserve Studies;
- Comprehensive Facility Evaluations;
- Roof evaluations, lifetime expectancy analyses, and continued maintenance or replacement cost projections;
- ADA accessibility compliance evaluations;
- Preparing Opinions of Probably Cost for future maintenance or remedy;
- Building Recertifications and Milestone Inspections;
- Structural Evaluations and Forensic Analyses;
- Hazardous Building Materials Surveys, including asbestos and lead-based paint surveys;
- Pavement Evaluations; and
- Retaining Wall Evaluations.



Whitestone also provides no-cost seminars pre-approved for CLE, AIA & PE CECs.